



Coastal Entangle

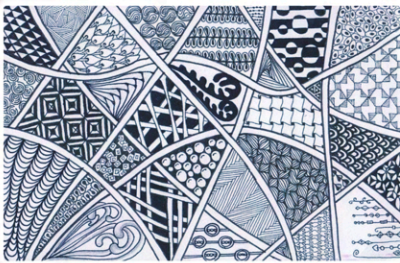
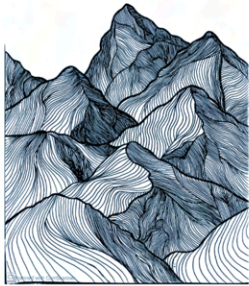


Women's Ready-To-Wear

Spring / Summer

'24

INSPIRATION



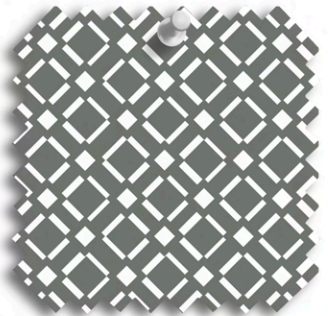
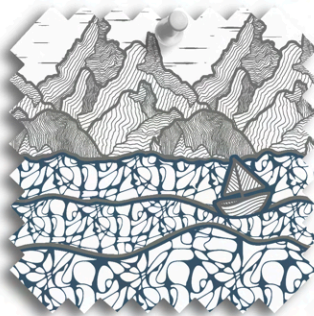
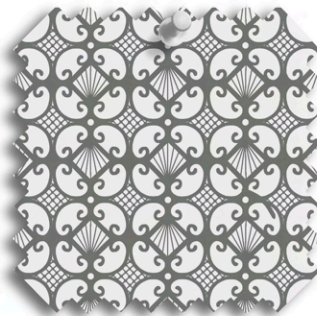
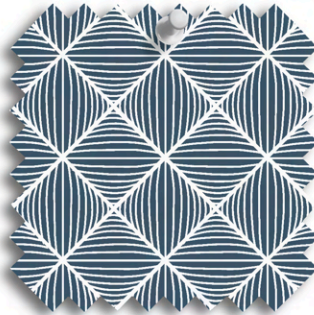
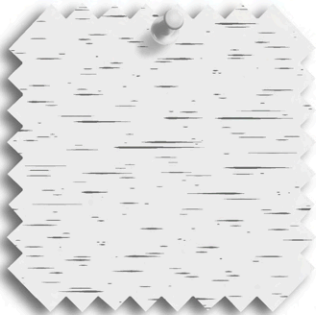
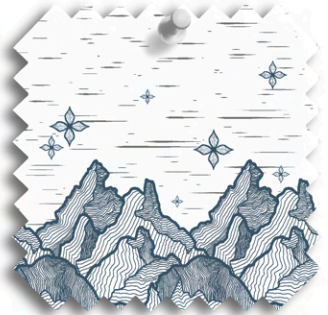
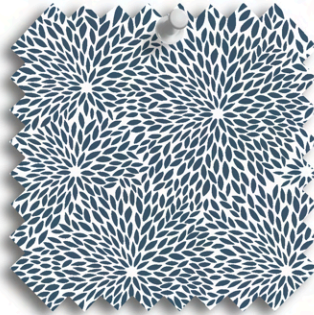
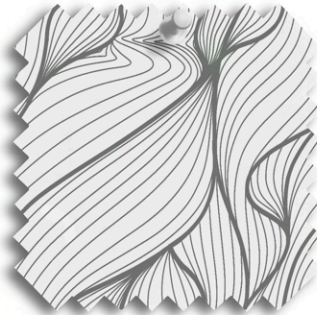
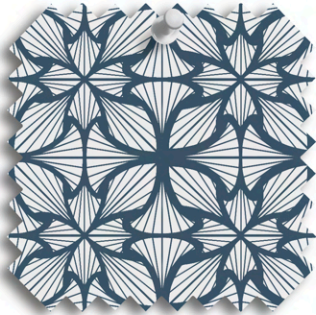
This collection is inspired by the beauty and order of zentangles and their repetition in our environment. The color as well as the flow of these prints lead the eye while instilling a calming feel of order, allowing the print to convey a sense of simply following the journey. Inspired by the commonalities of chinoiserie, toile, and scandinavian prints, this collection brings zen and maximal interest to the same room harmoniously.

PANTONE
7545 C

PANTONE
0000 C

PANTONE
424 C

SWATCHES



EMPIRE LILIES



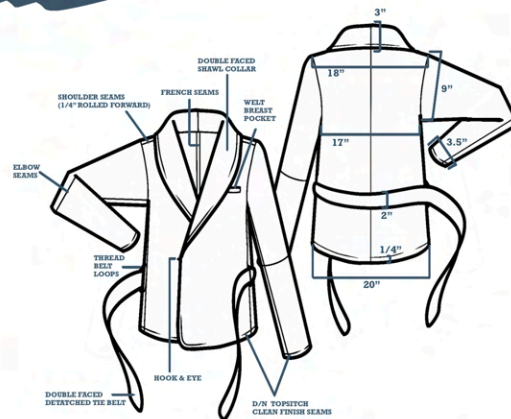
7545 C

WHITE C

SIZE: 7 in x 7 in

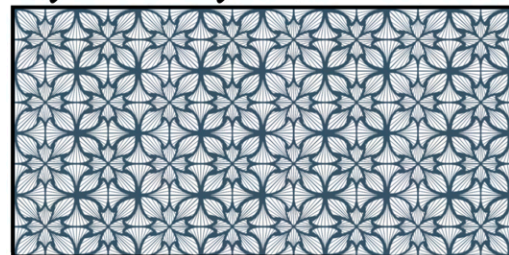
APPLICATION: *Digital Print*

FABRIC: *100% Cotton Knit*

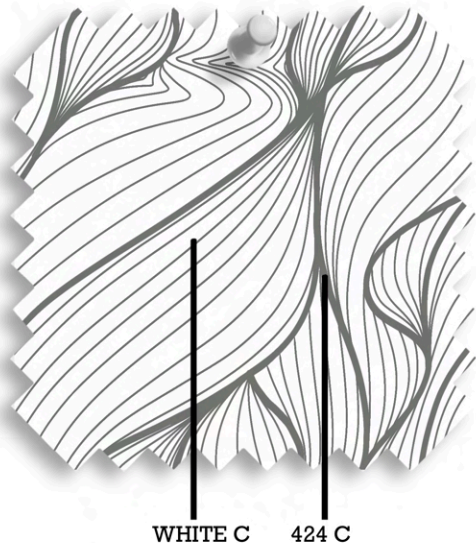


Knit blazer with a shawl collar and 2' detached tie belt at waist. Inside of blazer is unlined. All seams are french seamed & all edges are clean finished with a 1/4" D/N topstitch.

Reference of Repeat



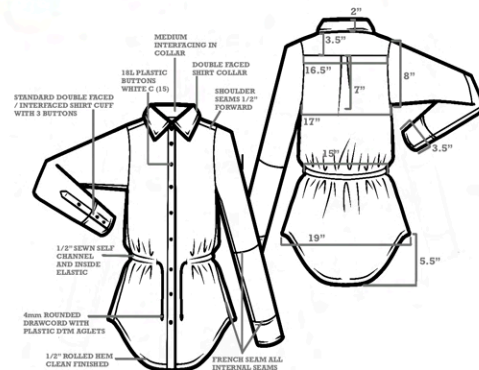
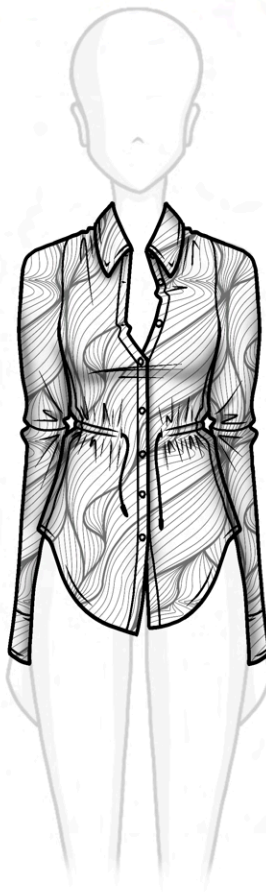
WINDY DUNES



SIZE: 7 in x 7 in

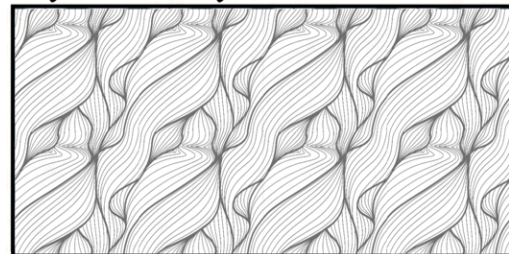
APPLICATION: *Digital Print*

FABRIC: *100% Cotton Plain Weave*

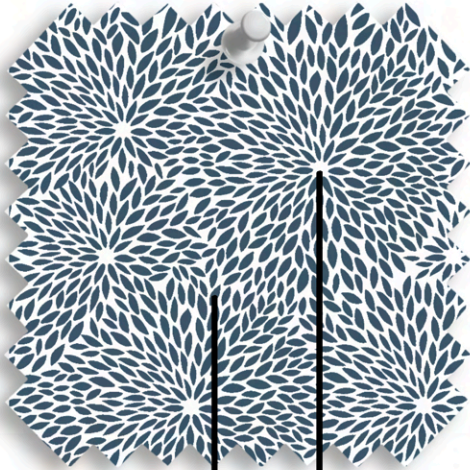


Collared tunic shirting with center front button opening and an elastic drawstring waistband with plastic aglets. Tunic also has scallop hem, dress shirt cuffs, and a box pleat at bottom of back yoke. Style line seams at sides, elbows, and forward shoulders

Reference of Repeat



ROYAL CHRYSANTHEMUM

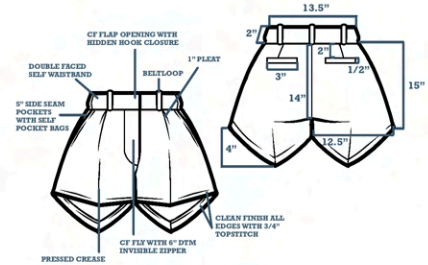


7545 C WHITE C

SIZE: 10 in x 10 in

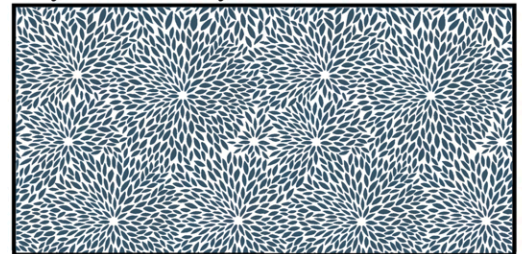
APPLICATION: *Digital Print*

FABRIC: *100% Cotton Canvas
(medium weight)*

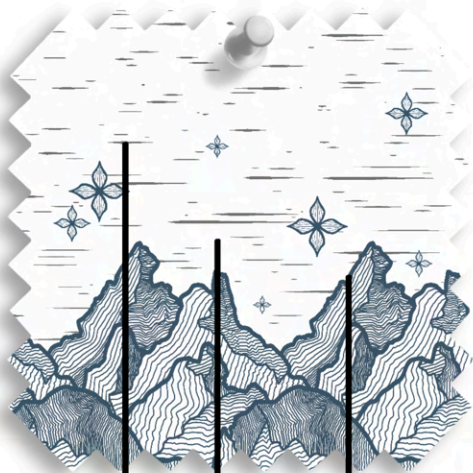


Wide leg, high waisted canvas safari shorts with side seam pockets, pressed creases, front waistband pleats, and a hidden hook closure at CF. Also having a high low, slightly angled custom hem and wide leg fitting at bottom edge. Invisible DTM zipper on inside of fly closure. 5 belt looks total around double faced waistband.

Reference of Repeat



PEAKS OF HEAVEN

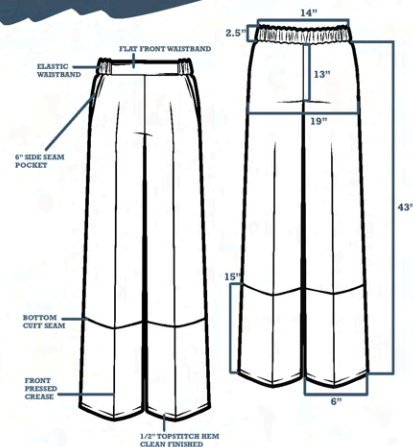
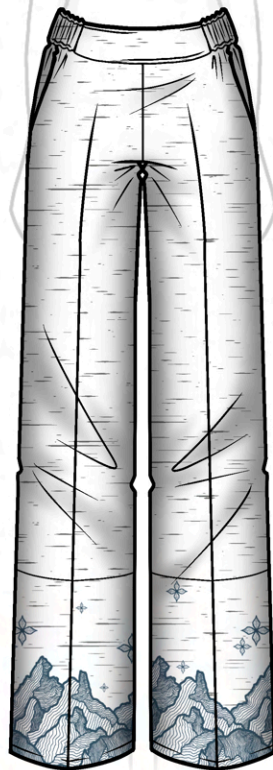


424 C WHITE C 7545 C

SIZE: 15 in x 15 in

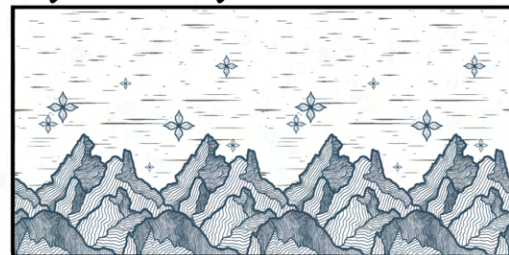
APPLICATION: *Digital Print*

FABRIC: *100% Polyester Satin*



Wide leg trouser pants with pressed creases on center front and back of pant legs. Double faced waistband has a flat front with elastic on the sides and back. Side seam with pockets and edges clean finished with 1/2" topstitch.

Reference of Repeat



AQUAFINA

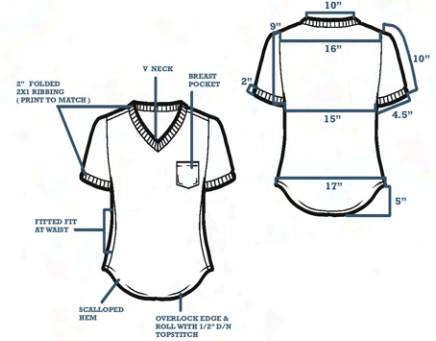
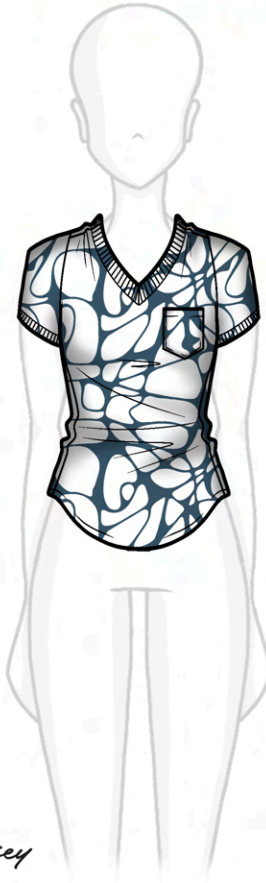


7545 C WHITE C

SIZE: 7 in x 7 in

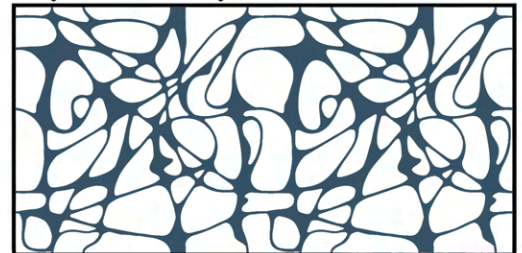
APPLICATION: *Digital Print*

FABRIC: *97% Cotton Lightweight Jersey
3% Spandex*



Fitted t-shirt with a scallop rolled overlock hem, a v neckline, breast pocket, and ribbing on the neckline and sleeve edges. 2x1 Ribbing on sleeves and neckline is 2" double faced and printed to match self pattern.

Reference of Repeat



QUILTED TILES

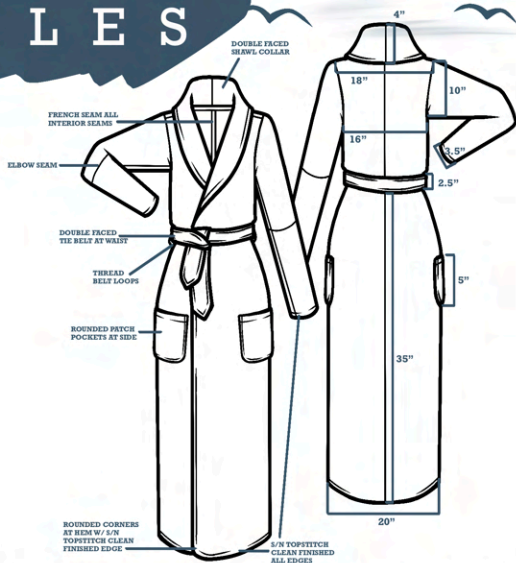
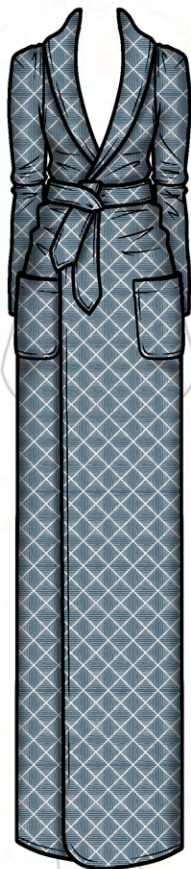


7545 C WHITE C

SIZE: 7 in x 7 in

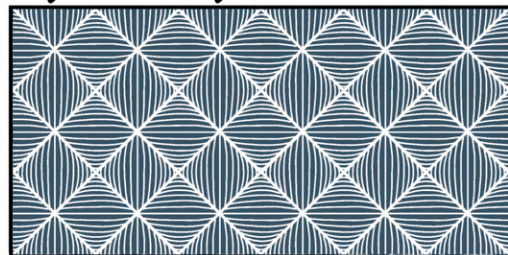
APPLICATION: *Digital Print*

FABRIC: *100% Merino Wool*

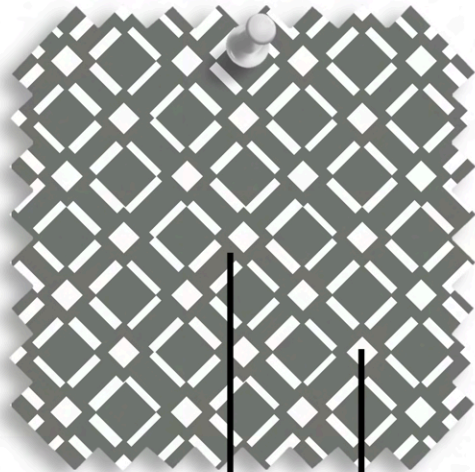


Long house coat with a shaped shawl collar, tie waist belt, and side patch pockets. Unlined, all interior seams are French seams and all edges are rolled clean finished with a 1/2" s/n topstitch

Reference of Repeat



GARDEN TRELLIS

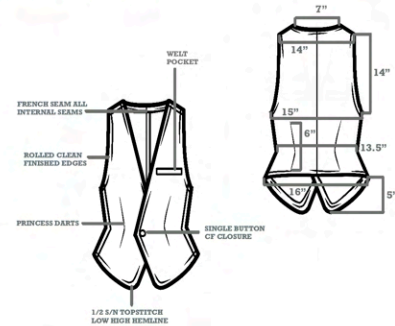


424 C WHITE C

SIZE: 7 in x 7 in

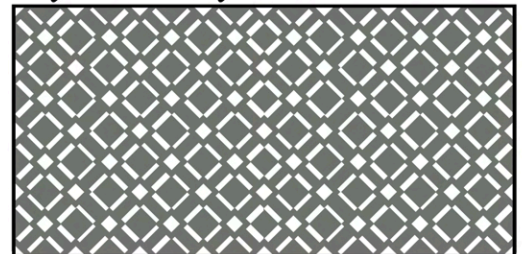
APPLICATION: *Digital Print*

FABRIC: *97% Cotton Medium Plainweave
3% Spandex*

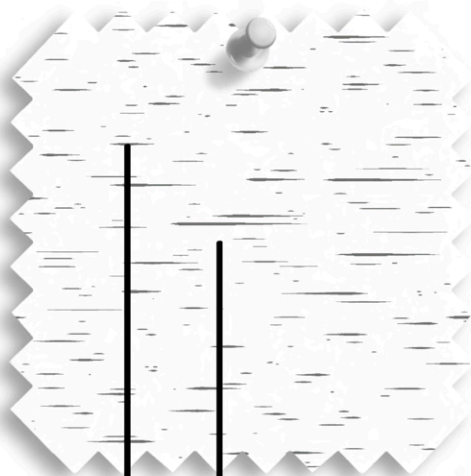


Semi-fitted single button vest with princess darts on both front and back. Welt chest pocket and low high hem line. Center back seam with all internal seams be French seams and all edges and hems are rolled clean finished with 1/2" s/n topstitch

Reference of Repeat



HEAVENLY BODIES



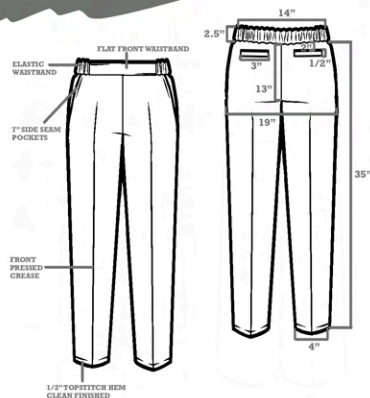
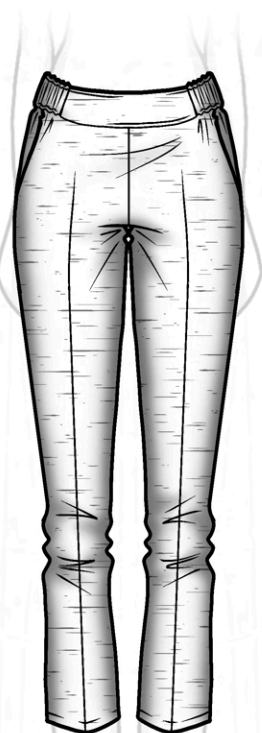
424 C

WHITE C

SIZE: 15 in x 15 in

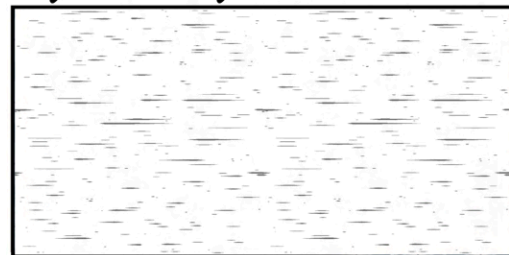
APPLICATION: *Digital Print*

FABRIC: *97% Cotton Medium Jersey
3% Spandex*

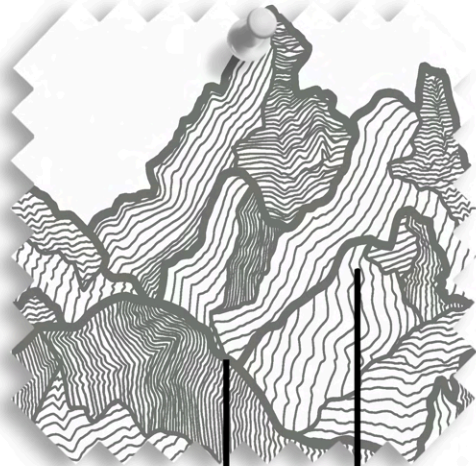


Capri pants with pressed creases on center front and back of pant legs. Double faced waistband has a flat front with elastic on the sides and back. Side seam with pockets on front and welt pockets on back. Edges clean finished with 1/2" topstitch.

Reference of Repeat



EARTHLY PEAKS

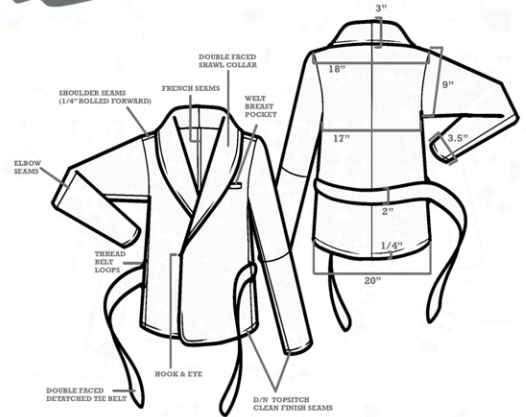


424 C WHITE C

SIZE: 7 in x 7 in

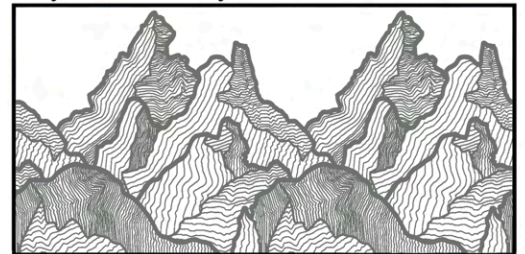
APPLICATION: *Digital Print*

FABRIC: *100% Cotton Knit*

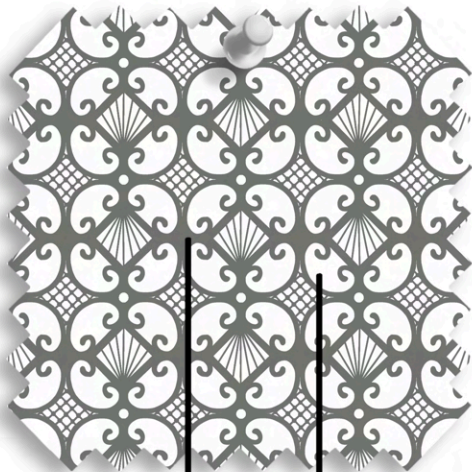


Knit blazer with a shawl collar and 2' detached tie belt at waist. Inside of blazer is unlined. All seams are french seamed & all edges are clean finished with a 1/4" D/N topstitch.

Reference of Repeat



COASTAL SHELLS

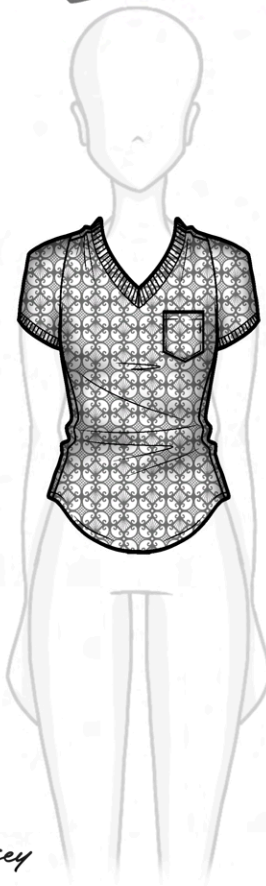


424 C WHITE C

SIZE: 7 in x 7 in

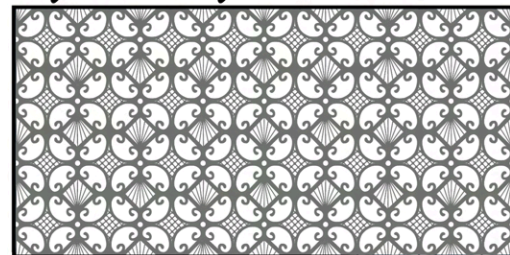
APPLICATION: *Digital Print*

FABRIC: *97% Cotton Lightweight Jersey
3% Spandex*



Fitted t-shirt with a scallop rolled overlock hem, a v neckline, breast pocket, and ribbing on the neckline and sleeve edges. 2x1 Ribbing on sleeves and neckline is 2" double faced and printed to match self pattern.

Reference of Repeat



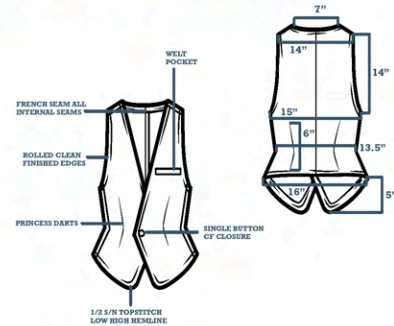
FIELD OF TRUFFLES



SIZE: 7 in x 7 in

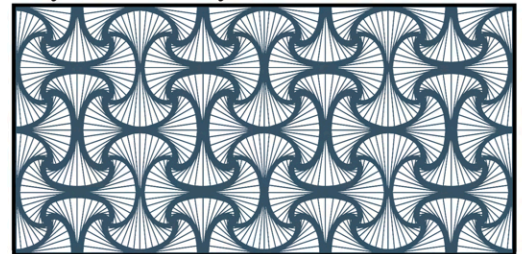
APPLICATION: *Digital Print*

FABRIC: *97% Cotton Medium Plainweave
3% Spandex*

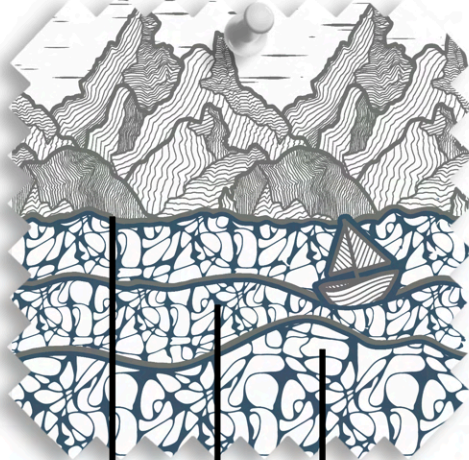


Semi-fitted single button vest with princess darts on both front and back. Welt chest pocket and low high hem line. Center back seam with all internal seams be French seams and all edges and hems are rolled clean finished with 1/2" s/n topstitch

Reference of Repeat



AMALFI CRUISE

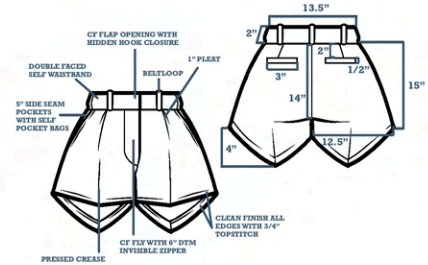


424 C 7545 C WHITE C

SIZE: 10 in x 10 in

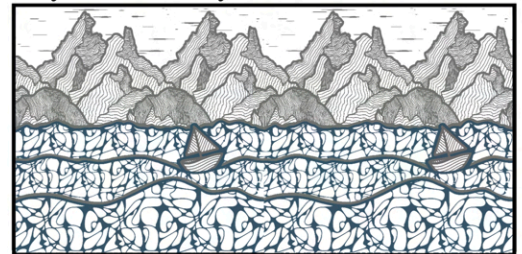
APPLICATION: *Digital Print*

FABRIC: *100% Cotton Canvas
(medium weight)*



Wide leg, high waisted canvas safari shorts with side seam pockets, pressed creases, front waistband pleats, and a hidden hook closure at CF. Also having a high low, slightly angled custom hem and wide leg fitting at bottom edge. Invisible DTM zipper on inside of fly closure. 5 belt looks total around double faced waistband.

Reference of Repeat



COLLECTION



COASTAL ZENTANGLES

SPR/SU '24